

E680Fi

SDLG Hydraulic Excavator 8 t 58hp



Reliability in Action

Member of the Volvo Group

E680Fi

Hydraulic Excavator

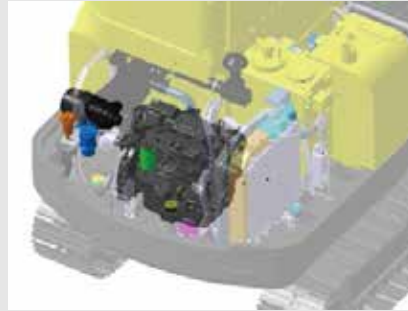
POWERFUL ENGINE

- Yanmar engine with EGR
- Single rotor distribution pump for higher ignition pressure and better combustion
- ECU controlled



Multiple filters for prolonged engine life

- 3-stage fuel filters
- 2-stage air filters
- Fuel Water Separator

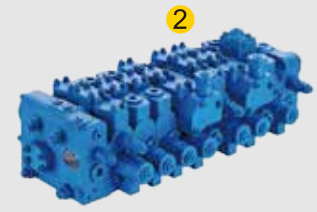
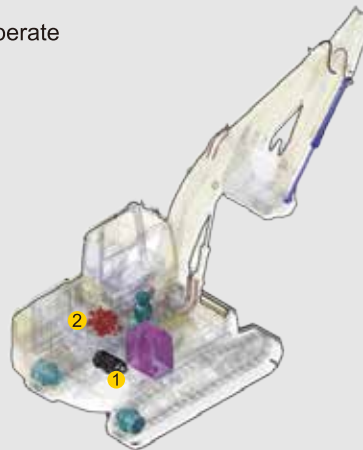
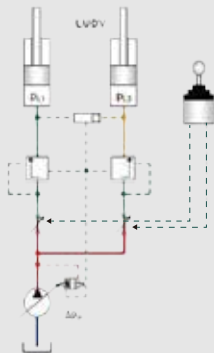


- 9 work modes
- Auto-idle function



EFFICIENT HYDRAULIC SYSTEM

- Load-sensing system
- Responsive, and smooth to operate



ROBUST STRUCTURE

- Integrated frame offering balanced load distribution
- Reinforced structures
- Large ground clearance



- Robotic-welded high-strength steel plates
- Stringent NDT procedures
- Reinforced joints



- Wear-resistant GP bucket lasting 20% longer

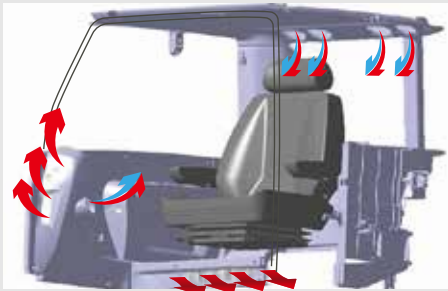


E680Fi

Hydraulic Excavator

SAFE AND COMFORTABLE CABIN

- Excellent fields of vision
- Large rear-view mirror
- Large wiper area
- Lock lever
- Good anti-slip
- Hydraulic cylinder protective covers
- Silicone oil shock absorbers
- 6-way adjustable mechanical suspension seat
- Strong A/C with multiple air outlets in a well-sealed cabin
- Tinted glass
- Multiple storage compartments



EASY MAINTENANCE

- Grouped filters, Electricals and lubrication points
- Easy access at standing height



OPTIONAL ATTACHMENTS

- Top/side mounted breakers
- LM buckets
- Ditching buckets
- Log grapples



E680Fi

Hydraulic Excavator

POWERFUL YET ENERGY-SAVING



The highly efficient four-cylinder Yanmar engine, coupled with an energy-saving hydraulic system, delivers both power and fuel economy. Work modes and an auto-idle function ensure power on-demand, minimising fuel consumption and noise.

SMOOTH-OPERATIONS



The load-sensing hydraulic system is engineered to deliver class leading performance and efficiency. The variable piston pump offers precise control in a wide variety of work conditions.

RELIABLE AND DURABLE



All core components in the engine and hydraulic systems are sourced from world-renowned manufacturers to meet our highest reliability standards. A robust structure provides excellent stability and machine durability.

MULTI-PURPOSE



Access more applications with breaker piping, rubber pads and other optional accessories. This versatile machine is ideal for a wide variety of urban and rural tasks.



SAFE AND COMFORTABLE



The cabin features excellent fields of vision, and is built on industry-leading vibration and noise reduction technologies. A powerful air-conditioning system provides comfort in cabin, reducing operator fatigue and improving productivity.

EASY TO MAINTAIN



Designed to minimise maintenance efforts, the main components, filter and electrical systems are grouped for easy, ground level access.



E680Fi

Hydraulic Excavator

ENGINE

| | Unit | E680Fi |
|------------------------|--------|------------------------------------|
| Model | - | 4TNV98-ZCVLGC |
| Type | - | In-line, water-cooled, four-stroke |
| Power | kW@rpm | 42.8@2100 |
| Max. torque | Nm@rpm | (226.5~246.7)/1575 |
| Displacement | ml | 3319 |
| No. of cylinders | - | 4 |
| Cylinder bore x stroke | mm | 98×110 |

ELECTRICAL SYSTEM

| | Unit | E680Fi |
|--------------------|------|--------|
| System voltage | V | 12 |
| Battery voltage | V | 12 |
| Battery capacity | Ah | 100 |
| Alternator voltage | V | 13.5 |
| Starter voltage | V | 12 |

UNDER CARRIAGE

| | Unit | E680Fi |
|-----------------------|------|--------|
| No. of track shoes | - | 2×39 |
| No. of top rollers | - | 2×1 |
| No. of bottom rollers | - | 2×5 |

PARAMETER

| | Unit | E680Fi |
|-----------------------------------|----------------|----------|
| Total mass | kg | 7700 |
| Bucket capacity | m ³ | 0.3 |
| Average ground pressure | mm | 34.5 |
| Slewing speed (r/min) | - | 10±0.3 |
| Traveling speed (low/high) (km/h) | - | 2.86/5.0 |
| Maximum digging force | kN | 50 |

HYDRAULIC SYSTEM

| | Unit | E680Fi |
|-----------------------------|---------------------|---|
| Hydraulic system type | - | Load-sensing control system |
| Working pressure | kgf/cm ² | 245 |
| Main valve model | - | HVSE18 |
| Hydraulic control type | - | Pilot-actuated proportional control valve |
| Maximum flow rate | L/min | 160 |
| Main pump model | - | HP3V80 |
| Motor (rotary/travel) model | - | MSG-44P-21/TM10VD-A-26/49-1 |

HYDRAULIC CYLINDER

| | Unit | E680Fi |
|--------------------------------------|------|---------------|
| Stick cylinder - bore × stroke | mm | 1 - 95 × 865 |
| Dozer blade cylinder - bore × stroke | mm | 1 - 120 × 180 |
| Boom cylinder - bore × stroke | mm | 1 - 110 × 850 |
| Bucket cylinder - bore × stroke | mm | 1 - 85 × 710 |

FUEL CHARGE

| | Unit | E680Fi |
|---|------|--------|
| Fuel filling capacity | L | 135 |
| Hydraulic oil filling capacity | L | 115 |
| Engine oil filling capacity | L | 12 |
| Oil filling capacity of walking reducer | L | 2×1.1 |
| Water radiator antifreeze coolant | L | 13.5 |

ROTARY SYSTEM

| | E680Fi |
|--------------------------|--|
| Slewing type | Hydraulic internal-tooth single-row ball bearing |
| Type of slewing brake | Wet disc (hydraulic oil release, spring compression) |
| Model of slewing bearing | QNA800*25AZ1 |

WALKING SYSTEM

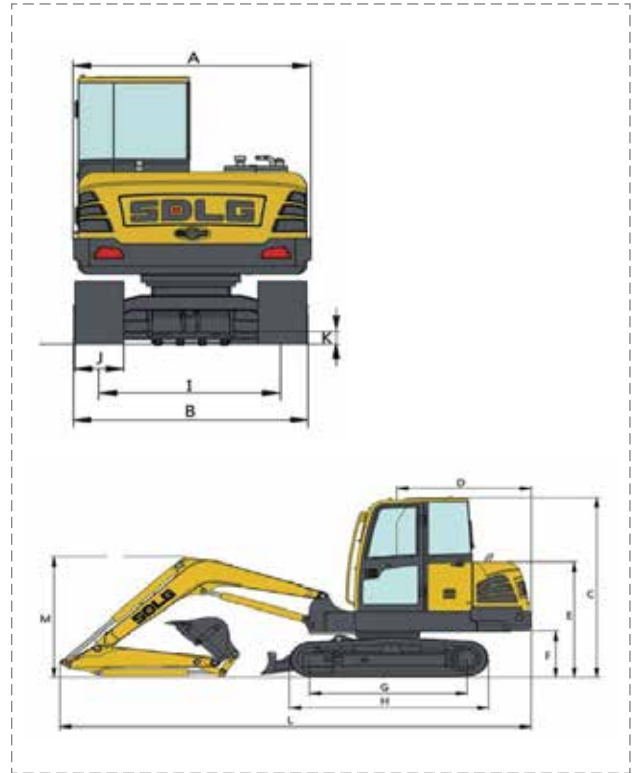
| | E680Fi |
|---------------------------------------|--|
| Number of supporting wheel (one side) | 5 |
| Track shoe width (three-teeth) (mm) | 450 |
| Number of carrier roller (one side) | 1 |
| Type of travel brake | Wet disc (hydraulic oil release, spring compression) |

E680Fi

Hydraulic Excavator

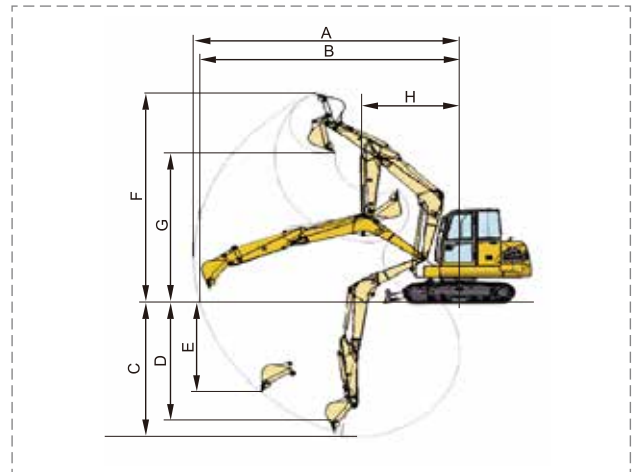
DIMENSIONS

| | Unit | E680Fi |
|--|------|----------------|
| Overall width of upper assembly (A) | mm | 2330 |
| Overall width (B) | mm | 2240 |
| Overall width of chassis (B) | mm | 2240 |
| Overall height to cab top (C) | mm | 2580 |
| Rear swing radius (D) | mm | 1895 |
| Overall height to hood top (E) | mm | 1765 |
| Ground clearance of upper assembly (F) | mm | 777 |
| wheelbase (G) | mm | 2200 |
| Overall length of crawler (H) | mm | 2825 |
| Wheel track of crawler (I) | mm | 1780 |
| Track shoe width (J) | mm | 450 |
| Minimum ground clearance (K) | mm | 375 |
| Overall length (L) | mm | 6235 |
| Arm length | mm | 1650 |
| Contour dimension of complete machine | mm | 6235×2240×2585 |
| Boom length | mm | 3710 |



EXCAVATING RANGE

| | Unit | E680Fi |
|--|------|--------|
| Maximum digging radius (A) | mm | 6340 |
| Maximum digging radius of reference ground (B) | mm | 6190 |
| Maximum digging depth (C) | mm | 4160 |
| Maximum digging depth under length of bottom surface of 2.5m (D) | mm | 3800 |
| Maximum vertical digging depth (E) | mm | 3760 |
| Maximum digging height (F) | mm | 7200 |
| Maximum discharge height (G) | mm | 5065 |
| Minimum front turning radius (H) | mm | 1760 |
| Shovel width (with band edge) | mm | 910 |



SWING SYSTEM

| | Unit | E680Fi |
|-------------|-------|--------------------|
| Swing motor | - | Axial piston motor |
| Swing brake | - | Wet disc |
| Swing speed | r/min | 0-10 |

DRIVE AND BRAKES

| | Unit | E680Fi |
|-----------------------------|------|---|
| Drive motor | - | 2 axial piston motors |
| Max drawbar pull | kN | 65 |
| Max travel speed (low/high) | km/h | 2.86/5.0 |
| Service/parking brakes | - | Wet disc, spring applied, hydraulic release |
| Gradeability | ° | 35 |

Equipment and Features

STANDARD EQUIPMENT

E680Fi

Engine

| | |
|--------------------------|---|
| Yanmar engine | S |
| Turbocharger | - |
| Two-stage air filters | S |
| Three-stage fuel filters | S |
| Oil-water separator | S |
| Pre-heater | S |

Electrical/Electronic control system

| | |
|--|---|
| Engine safe start with restart prevention | S |
| Idling switch | S |
| Auto-idle function | S |
| 9 work modes | S |
| Central fuse box | S |
| Halogen work lights (Frame-mounted 2 & Boom-mounted 1 LH) | S |
| Battery, 12V | S |
| Master electrical disconnect switch | S |
| Start motor, 12V | S |
| Colour monitor | S |
| Lock lever | S |

Hydraulic system

| | |
|-------------------------------|---|
| Load-sensing hydraulic system | S |
| Boom/arm/swing priority | S |
| Boom/arm regeneration | S |
| Boom/arm holding | S |
| Two speed travel motors | S |
| Cylinder/motor cushioning | S |
| Dust sealing | S |
| Hydraulic oil (ISO VG46) | S |
| Muulti-stage filtration | S |

Frame

| | |
|----------------------------|---|
| Reinforced revolving frame | S |
| Dozer blade | S |
| Rear-view mirror | S |
| Tool storage area | S |

Undercarriage

| | |
|----------------------------------|---|
| Durable "X" under-carriage | S |
| Greased and sealed track links | S |
| Reinforced carrier/top rollers | S |
| Steel track with triple grousers | S |

Cab and interior

| | |
|--------------------------------------|---|
| Fabric operator seat with suspension | S |
| Seat belt | S |
| Joysticks | S |
| Radio with MP3/AUX | S |
| Master key | S |
| Hour meter | S |
| Sun visor | S |
| Dual arm rests | S |
| Air conditioner | S |
| Sliding wind screen | S |

OPTIONAL EQUIPMENT

E680Fi

Electrical/Electronic control system

| | |
|--|---|
| Fuel filler pump | o |
| Extra halogen work lights (Cab-mounted 1/ Boom-mounted 1RH) | o |
| Rotating warning beacon | o |
| Rear-view camera | o |

Hydraulic system

| | |
|---|---|
| High-temperature/Low-temperature hydraulic oil module | o |
|---|---|

Undercarriage

| | |
|---------------------|---|
| 600mm steel track | o |
| Rubber Pads | o |
| Without dozer blade | o |

Attachment

| | |
|---|---|
| Ditching buckets | o |
| X1 pipes | o |
| X3 pipes | o |
| Side or top mounted breakers | o |
| Log grapples | o |
| Front upper/front lower/top FOG (falling object guard) | o |



Member of the VOLVO Group

SDLG is member of the Volvo Group and one of the largest manufacturers of construction machinery, with a wide network of dealerships and service workshops throughout the world.

Toll free – 1800 108 6586

www.sdlgindia.com

Connect with us on:  