

E6135Fi

SDLG Hydraulic Excavator 12.5 - 13.5 t 101hp

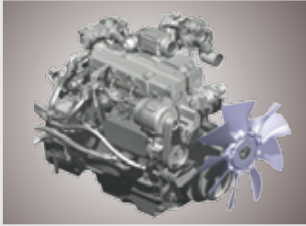


Reliability in Action

Member of the Volvo Group

POWERFUL ENGINE

- DDE engine customised for SDLG
- Electronic unit pump
- Turbocharger + intercooler
- ECU controlled



- Well-matched engine and hydraulic systems
- 10 work modes
- Auto-idle function



- 2-stage air filters
- 2-stage fuel filters
- Fuel injector filter
- Water level alarm from Fuel Water Separator
- Auto engine power cut-off upon fault detection
- Limp-home function

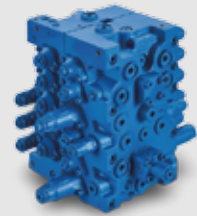
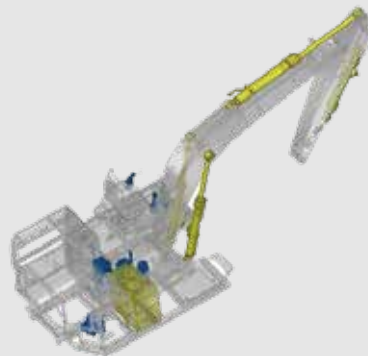
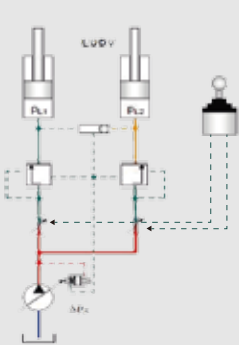


- New-generation electronics
- New-generation colour display
- Self fault diagnostics



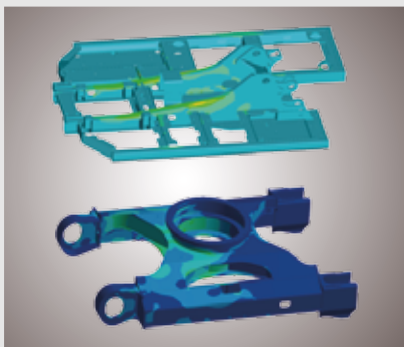
ADVANCED HYDRAULIC SYSTEM

- Load-sensing system / Negative-flow system
- Double pump confluence function
- Regeneration function
- Priority function
- Automatic travel speed selection



ROBUST STRUCTURES

- Reinforced X undercarriage with 35% higher strength



- Reinforced boom & arm
- Robotic welding
- Welding flaw detection



- Anti-wear bucket with 20% longer life
- Chromed pins



E6135Fi

Hydraulic Excavator

SAFE AND COMFORTABLE CABIN

- Excellent fields of vision
- Sliding windscreen
- Large wiper area
- 6-way adjustable fabric suspension seat
- Powerful A/C with multiple air outlets in a well-sealed cabin
- Tinted glass
- Silicone oil shock absorbers
- Multi-function colour LED display



EASY MAINTENANCE

- Wide engine hood openings
- Grouped filters, pressure testing port and electrics with ground-level access
- Computer diagnostics interface
- Good anti-slip



RICH OPTIONS

- Top/side mounted breakers
- Rock/GP/LM buckets
- Multiple track shoe width
- Additional work lights
- Cabin protection guards



E6135Fi

Hydraulic Excavator

POWERFUL YET ENERGY-SAVING



The high-torque, low-RPM DDE engine delivers both power and efficiency in 10 optimised work modes. The electronic unit pump (EUP) design features a high injection pressure and a good tolerance on fuel quality.

SMOOTH OPERATIONS



E6135Fi uses a Negative flow system. the hydraulic systems are sensitive, reliable and highly efficient. they are equipped with regeneration and priority functions

RELIABLE AND DURABLE



Both the engine and hydraulic systems are supplied from world-renowned manufacturers. Reinforced boom, arm and undercarriage, chromed pins and upgraded electronics on board provide excellent machine durability and reliability.

MULTI- PURPOSE



Access more applications with breaker piping and various bucket and track shoe options. This machine is ideal for a wide range of general construction tasks.



SAFE AND COMFORTABLE



A variety of protective features improve man-machine safety. A spacious cabin provides a pleasing driving experience with excellent fields of vision, a powerful air conditioning system, a comfortable suspension seat, and noise and vibration reduction technologies.

EASY TO MAINTAIN



Large engine hood openings, centralised filters and electrics with ground-level access reduce maintenance efforts. A computer interface is available for quick diagnostics and review of fault history.



E6135Fi

Hydraulic Excavator

ENGINE

	Unit	E6135Fi
Model	-	BF4M2012-10T3R-B124
Type	-	four-stroke, turbocharged, inter-cooled
Power	kW@rpm	75@2000
Max. torque	Nm@rpm	425/1500
Displacement	ml	4038
No. of cylinders	-	4
Cylinder bore x stroke	mm	101×126

ELECTRICAL SYSTEM

	Unit	E6135Fi
System voltage	V	24
Battery voltage	V	24
Battery capacity	Ah	2x100
Alternator voltage	V	28
Starter voltage	V	24

UNDER CARRIAGE

	Unit	E6135Fi
No. of track shoes	-	2×42
No. of top rollers	-	2×1
No. of bottom rollers	-	2×6
No. of track guards	-	2×1

PARAMETER

	Unit	E6135Fi
Total mass	kg	12500
Bucket capacity	m ³	0.55
Bucket capacity range	m ³	0.48 & 0.6
Average ground pressure	mm	40.9
Slewing speed	r/min	10.3
Traveling speed (low/high)	km/h	3.0/5.1
Maximum digging force	kN	85

HYDRAULIC SYSTEM

	Unit	E6135Fi
Hydraulic system type	-	Double Pump Constant Power Negative Flow Control
Working pressure	kgf/cm ²	330/350
Main valve model	-	HVME180B
Hydraulic control type	-	Pilot-actuated proportional control valve
Maximum flow rate	L/min	2×110+20
Main pump model	-	HP3V75D
Motor (rotary/travel) model	-	M5X80CHB/TM22VC

HYDRAULIC CYLINDER

	Unit	E6135Fi
Boom cylinder - bore × stroke	mm	2 - 100 × 973
Arm cylinder - bore × stroke	mm	1 - 115 × 970
Bucket cylinder - bore × stroke	mm	1 - 90 × 856

FUEL CHARGE

	Unit	E6135Fi
Fuel filling capacity	L	260
Hydraulic oil filling capacity	L	190
Engine oil filling capacity	L	13
Oil filling capacity of walking reducer	L	2×2.2
Oil filling capacity of slewing reducer	L	3.9
Water radiator antifreeze coolant	L	19.5

ROTARY SYSTEM

	E6135Fi
Slewing type	Hydraulic internal-tooth single-row ball bearing
Type of slewing brake	Wet disc (hydraulic oil release, spring compression)
Model of slewing bearing	-

WALKING SYSTEM

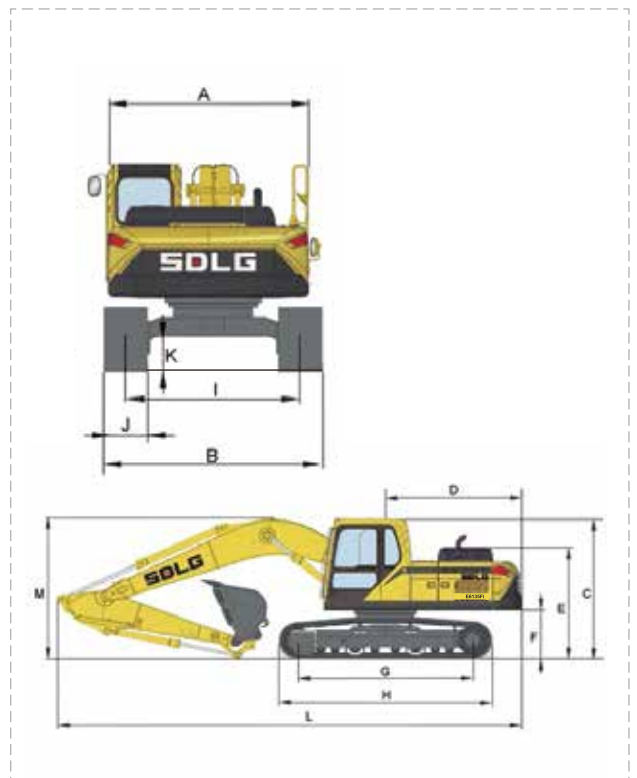
	E6135Fi
Number of supporting wheel (one side)	6
Track shoe width (three-teeth) (mm)	500
Number of carrier roller (one side)	1
Type of travel brake	Wet disc (hydraulic oil release, spring compression)

E6135Fi

Hydraulic Excavator

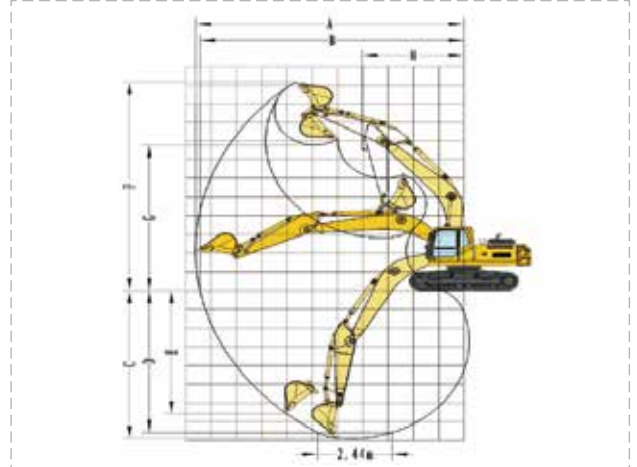
DIMENSIONS

	Unit	E6135Fi
Overall width of upper assembly	(A)	mm 2450
Overall width	(B)	mm 2490
Overall width of chassis	(B)	mm 2490
Overall height to cab top	(C)	mm 2770
Rear swing radius	(D)	mm 2200
Maximum digging depth	(D)	mm 4920
Overall height to hood top	(E)	mm 2080
Ground clearance of upper assembly	(F)	mm 900
wheelbase	(G)	mm 2700
Overall length of crawler	(H)	mm 3440
Wheel track of crawler	(I)	mm 1990
Track shoe width	(J)	mm 500
Minimum ground clearance	(K)	mm 430
Overall length	(L)	mm 7340
Overall height		mm 2830
Boom length		mm 4260
Wheel track		mm 1990
Arm length		mm 2315
Contour dimension of complete machine		mm 7340×2490×2830



EXCAVATING RANGE

	Unit	E6135Fi
Maximum digging radius	(A)	mm 7790
Maximum digging radius of reference ground	(B)	mm 7650
Maximum digging depth	(C)	mm 5060
Maximum vertical digging depth	(E)	mm 4625
Maximum digging height	(F)	mm 7900
Maximum discharge height	(G)	mm 5625
Minimum front turning radius	(H)	mm 2650
Shovel width (with band edge)		mm 1087



SWING SYSTEM

	Unit	E6135Fi
Swing motor	-	Axial piston motor
Swing brake	-	Wet disc
Swing speed	r/min	0-10.3

DRIVE AND BRAKES

	Unit	E6135Fi
Drive motor	-	2 axial piston motors
Max drawbar pull	kN	109.8
Max travel speed (low/high)	km/h	3.0/5.1
Service/parking brakes	-	Wet disc, spring applied, hydraulic release
Gradeability	°	35

ATTACHMENTS

Bucket	Model	Capacity/m ³	Width/mm	Weight/kg	Number of teeth/side cutters
	E6135Fi	0.55	1040	497	5/2

Equipment and Features

STANDARD EQUIPMENT			
		E6135Fi	
Engine			
Dalian diesel engine	S		
Electronic unit injection pump	S		
Turbocharger	S		
Inter-cooler	S		
Two-stage air filters	S		
Two-stage fuel filters	S		
Oil-water separator	S		
Pre-heater	S		
Electrical/Electronic control system			
Engine safe start with restart prevention	S		
Oil-water separator level indicator	S		
Automatic idling system	S		
10 work modes	S		
Central fuse box	S		
High-capacity halogen work lights (Frame-mounted 2 & Boom-mounted 1 LH)	S		
Battery, 24V	S		
Master electrical disconnect switch	S		
Starter Motor, 24V	S		
Colour monitor and keypad	S		
Acoustic travel alarm	S		
Lock lever	S		
Fault diagnosis interface (tool not included)	S		
Hydraulic system			
Load-sensing hydraulic system	-		
Negative flow hydraulic system	S		
Boom/arm/swing priority	S		
Boom/arm regeneration	S		
Boom/arm holding	S		
Automatic two-speed travel motors	S		
Cylinder/swing cushioning	S		
Dust sealing	S		
Hydraulic oil (ISO VG46)	S		
Multi-stage filtration	S		
Frame			
Reinforced revolving frame	S		
Reinforced boom mounting	S		
Heavy-duty anti-sintering bushings	S		
Rear-view mirror	S		
		Access way with handrail S	
		Centralized lubrication points S	
		Undercarriage	
		Durable "X" undercarriage S	
		Greased and sealed track links S	
		Reinforced carrier/top rollers S	
		Steel track with triple grousers S	
		Cab and interior	
		Fabric operator seat with suspension S	
		Seat belt S	
		Joysticks S	
		Radio with MP3/AUX S	
		Master key S	
		Hour meter S	
		Sun visor S	
		Dual armrests S	
		Air conditioner S	
		Sliding wind screen S	
		Cup holder S	
OPTIONAL EQUIPMENT			
		E6135Fi	
		Electrical/Electronic control system	
		Fuel filler pump o	
		Extra halogen work lights (Cab-mounted 1 / counterweight-mounted 1) o	
		Rotating warning beacon o	
		Rear-view camera o	
		Burglar alarm o	
		Hydraulic system	
		High-temperature/low-temperature hydraulic oil module o	
		Undercarriage	
		600/700/800mm steel track o	
		Attachment	
		Light Material Bucket o	
		HD Bucket o	
		X1 pipes o	
		X3 pipes o	
		Side or top mounted breakers o	
		Hydraulic crusher o	
		Log grapple o	
		Light front FOG (falling object guard) o	
		Heavy front/top FOG o	



Member of the VOLVO Group

SDLG is member of the Volvo Group and one of the largest manufacturers of construction machinery, with a wide network of dealerships and service workshops throughout the world.

Toll free – 1800 108 6586

www.sdlgindia.com

Connect with us on:  